

Preliminary Program - Draft Copy
 New Advanced Manufacturing & Technology Center
 Anderson County District 3, 4 & 5



mcmillan pazdan smith
 architecture

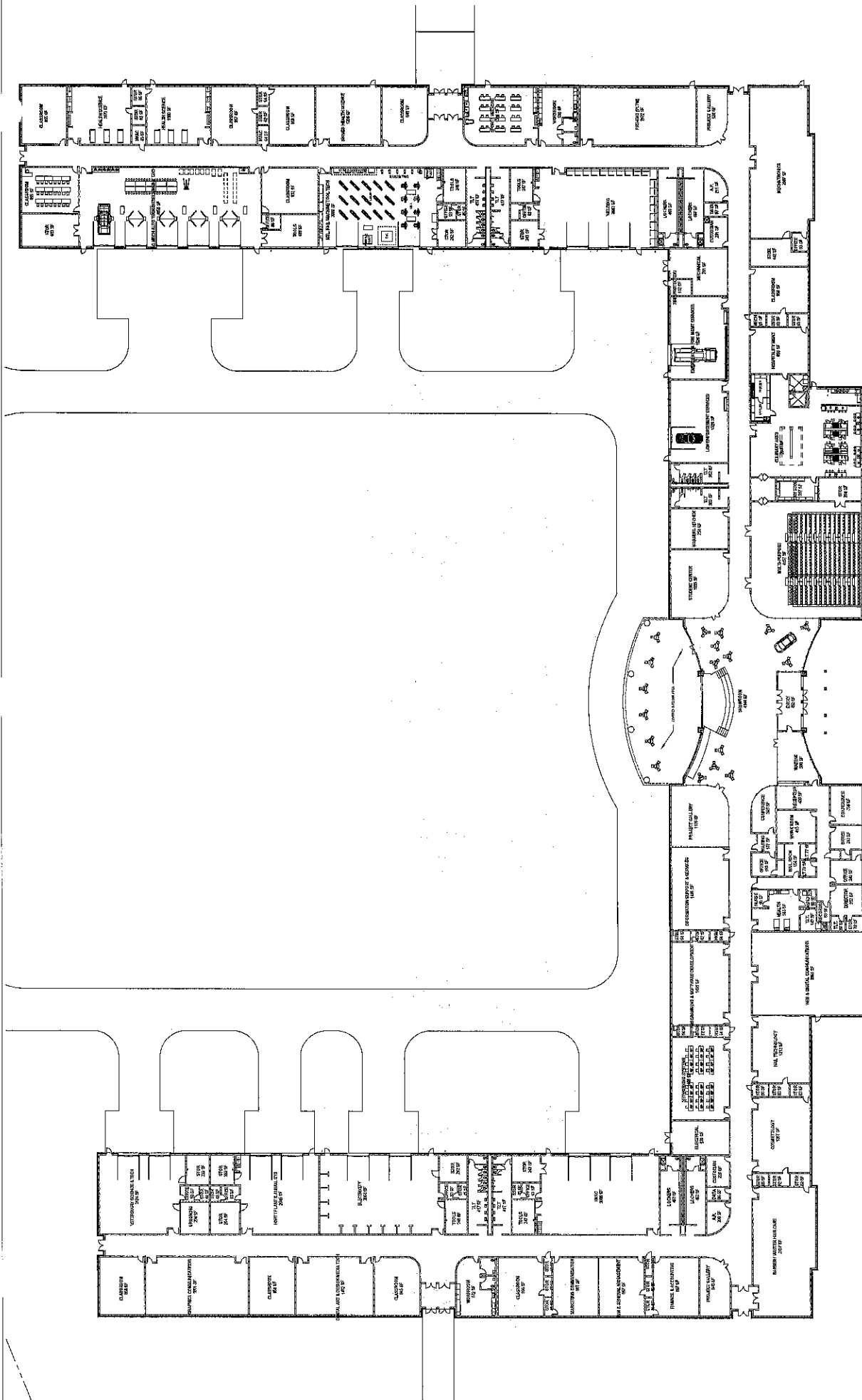
Space	Quantity	Net Area	Total Net Area	Gross Area
Career Clusters				
Agricultural, Food & Natural Resources				
<u>Horticulture</u>				7,250
<u>Plant & Animal Systems</u>				
Greenhouse	1	3,000	3,000	
Classroom	1	800	800	
Lab	1	1,600	1,600	
Storage	1	200	200	
Lockers	1	200	200	
<u>Veterinary Science & Technology</u>				3,500
Lab	1	1,600	1,600	
Classroom	1	800	800	
Storage	1	200	200	
Lockers	1	200	200	
Architecture & Construction				
<u>HVAC</u>				4,900
Lab	1	2,800	2,800	
Lecture Space	1	400	400	
Office	1	120	120	
Tool Room	1	200	200	
Storage	1	200	200	
Lockers	1	200	200	
<u>Electricity</u>				4,900
Lab	1	2,800	2,800	
Lecture Space	1	400	400	
Office	1	120	120	
Tool Room	1	200	200	
Storage	1	200	200	
Lockers	1	200	200	

Space	Quantity	Net Area	Total Net Area	Gross Area
Art, AV Technology & Communication				
<u>Digital Art & Design</u>				4,250
<u>Media Technology</u>				
Lab	1	1,400	1,400	
Classroom	2	800	1,600	
Storage	2	200	400	
<u>Graphics Communications</u>				3,500
Lab	1	1,600	1,600	
Classroom	1	800	800	
Storage	1	200	200	
Lockers	1	200	200	
Business, Management & Administration				
<u>Business Information Management</u>				1,125
<u>General Management</u>				
Classroom	1	800	800	
Storage	1	100	100	
Finance				
<u>Academy of Finance</u>				1,125
<u>Accounting</u>				
Classroom	1	800	800	
Storage	1	100	100	
Health Science				
<u>Health Science</u>				5,600
Lab	2	1,200	2,400	
Classroom	2	800	1,600	
Storage	2	200	400	
Toilet Room	1	80	80	
<u>Sports Medicine</u>				2,000
Lab	1	1,400	1,400	
Storage	1	200	200	
<u>Biomedical Health Sciences (PLTW)</u>				3,750
Lab	1	1,200	1,200	
Classroom	2	800	1,600	
Storage	1	200	200	

Space	Quantity	Net Area	Total Net Area	Gross Area
Hospitality & Tourism				
<u>Culinary Arts</u>				6,613
Kitchen	1	2,600	2,600	
Office	1	120	120	
Dry Storage	1	400	400	
Custodian / Chemical Storage	1	150	150	
Freezer	1	120	120	
Cooler	1	120	120	
Toilet Room	1	80	80	
Lockers	1	200	200	
Classroom	1	800	800	
Storage	1	200	200	
Commercial Laundry Room	1	500	500	
<u>Hospitality Management & Operations</u>				1,250
Classroom	1	800	800	
Storage	1	200	200	
Human Services				
<u>Cosmetology</u>				2,400
Lab	1	1,400	1,400	
Office	1	120	120	
Storage	1	200	200	
Lockers	1	200	200	
<u>Nail Technology</u>				2,400
Lab	1	1,400	1,400	
Office	1	120	120	
Storage	1	200	200	
Lockers	1	200	200	
<u>Barber / Master Hair Care</u>				2,400
Lab	1	1,400	1,400	
Office	1	120	120	
Storage	1	200	200	
Lockers	1	200	200	
Information Technology				
<u>Information Support & Services</u>				2,000
Lab / Classroom	1	1,400	1,400	
Storage	1	200	200	
<u>Web & Digital Communication</u>				2,000
Lab / Classroom	1	1,400	1,400	
Storage	1	200	200	

Space	Quantity	Net Area	Total Net Area	Gross Area
<u>Networking Systems</u>				2,000
Lab / Classroom	1	1,400	1,400	
Storage	1	200	200	
<u>Programming & Software Development</u>				2,000
Lab / Classroom	1	1,400	1,400	
Storage	1	200	200	
Law, Public Safety, Corrections & Security				
<u>Emergency & Fire Management Services</u>				2,250
Lab / Classroom	1	1,400	1,400	
Storage	1	200	200	
Lockers	1	200	200	
<u>Law Enforcement Services</u>				2,000
Lab / Classroom	1	1,400	1,400	
Storage	1	200	200	
Manufacturing				
<u>Mechatronics</u>				4,900
Lab	1	2,800	2,800	
Lecture Space	1	400	400	
Office	1	120	120	
Tool Room	1	200	200	
Storage	1	200	200	
Lockers	1	200	200	
<u>Metal Fabrication</u>				4,900
<u>Machine Tool Technology</u>				
Lab	1	2,800	2,800	
Lecture Space	1	400	400	
Office	1	120	120	
Tool Room	1	200	200	
Storage	1	200	200	
Lockers	1	200	200	
<u>Welding</u>				4,900
Lab	1	2,800	2,800	
Lecture Space	1	400	400	
Office	1	120	120	
Tool Room	1	200	200	
Storage	1	200	200	
Lockers	1	200	200	
Marketing				
<u>Marketing Communications</u>				1,250
Classroom	1	800	800	
Storage	1	200	200	

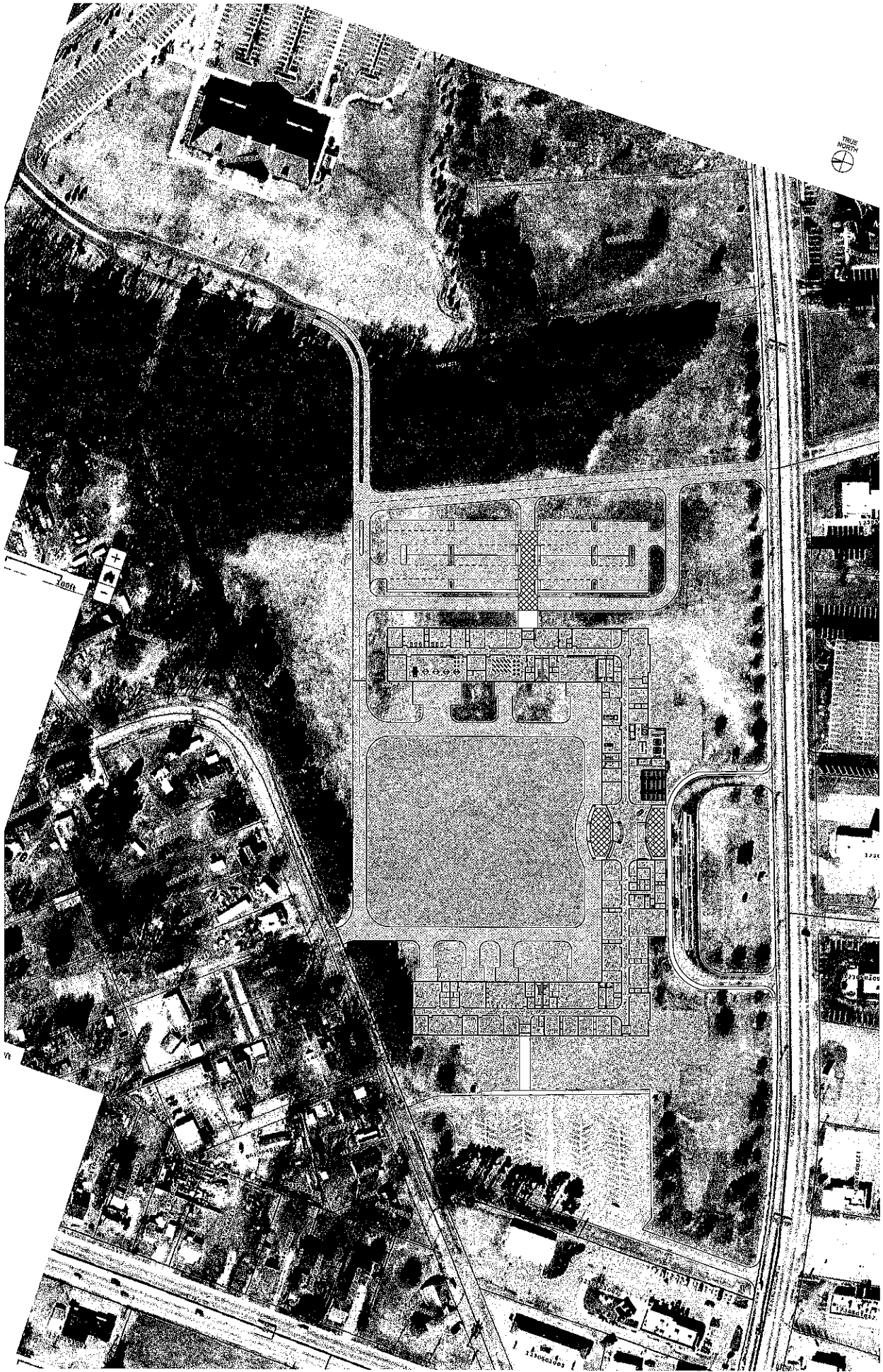
Space	Quantity	Net Area	Total Net Area	Gross Area
STEM				
<u>Pre-Engineering (PLTW)</u>				3,250
Lab	1	2,000	2,000	
Lecture Space	1	400	400	
Storage	1	200	200	
Transportation, Distribution & Logistics				
<u>Agricultural Mechanics</u>				9,025
<u>Auto Technology</u>				
<u>Diesel Engine Technology</u>				
Service Bays	5	900	4,500	
Classroom	2	800	1,600	
Office	1	120	120	
Tool Room	2	200	400	
Storage	2	200	400	
Lockers	1	200	200	
Administration				
				4,763
Receptionist	1	200	200	
Lobby	1	400	400	
Teacher Work Room/ Mail / Copy	1	600	600	
Director's Office	1	175	175	
Ass't Director Office	1	120	120	
SRO	1	120	120	
Bookkeeper	1	120	120	
Guidance	1	175	175	
Conference	2	300	600	
Toilet Rooms	2	80	160	
Storage	1	120	120	
File Storage	1	120	120	
Nurse / Tit	1	300	300	
Remote Teacher Work Room	1	600	600	
Multi-Purpose				
				6,750
Lecture Hall	1	4,500	4,500	
Control Room	1	600	600	
Storage	1	300	300	
Auxiliary Spaces				
				5,969
Mechanical Rooms	8	300	2,400	
Custodial Closets	4	200	800	
Fire Protection	1	125	125	
Electrical Rooms	5	200	1,000	
Data	6	75	450	
Total Net Area			91,935	
Grossing Factor			1.25	
Total Gross Area				114,919
Estimated Cost per SF			\$ 220	\$ 25,282,125



OVERALL FLOOR PLAN

ANDERSON INSTITUTE OF TECHNOLOGY
 ANDERSON SCHOOL DISTRICT 3, 4 & 5
 AUGUST 5, 2015

mcmillan | pazdan | smith
 architecture



ANDERSON INSTITUTE OF
TECHNOLOGY

ANDERSON SCHOOL DISTRICT 3, 4 & 5
08/03/15

mcmillan | pazdan | smith
architecture

Site Plan